

1249



ACT Building Lic: 2012767

**FIXED
PRICE
EXTENSIONS**

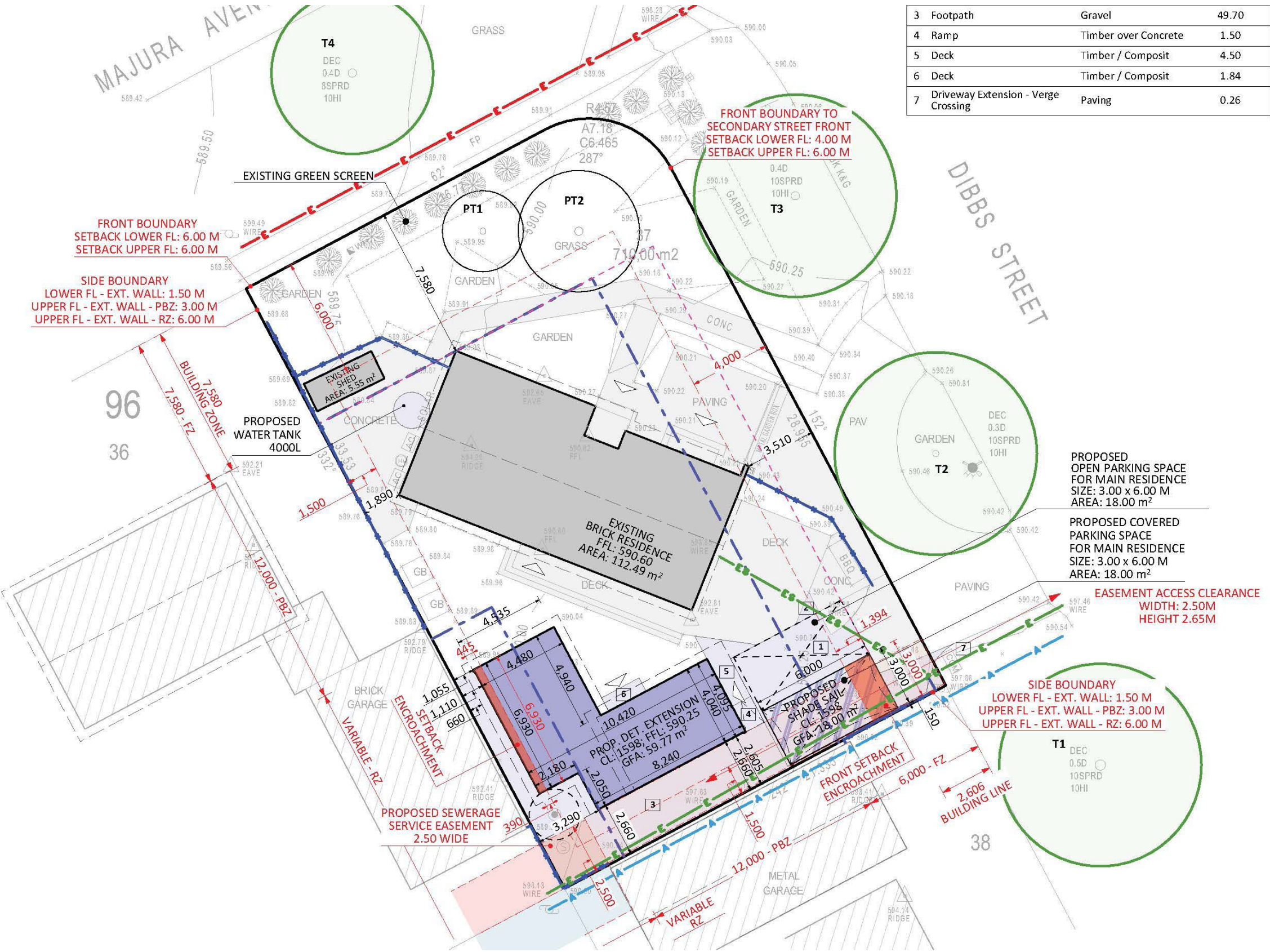












| | | | |
|---|-------------------------------------|----------------------|-------|
| 3 | Footpath | Gravel | 49.70 |
| 4 | Ramp | Timber over Concrete | 1.50 |
| 5 | Deck | Timber / Composit | 4.50 |
| 6 | Deck | Timber / Composit | 1.84 |
| 7 | Driveway Extension - Verge Crossing | Paving | 0.26 |

ENCROACHMENT LEGEND: (markings may overlap)

- Setback encroachment - Lower and / or Upper Level
- Setback encroachment - Upper Level Only
- Solar Building Envelope encroachment

BUILDING ZONE ABBREVIATIONS

- FZ Front Zone
- PBZ Primary Building Zone
- RZ Rear Zone

TREE LEGEND

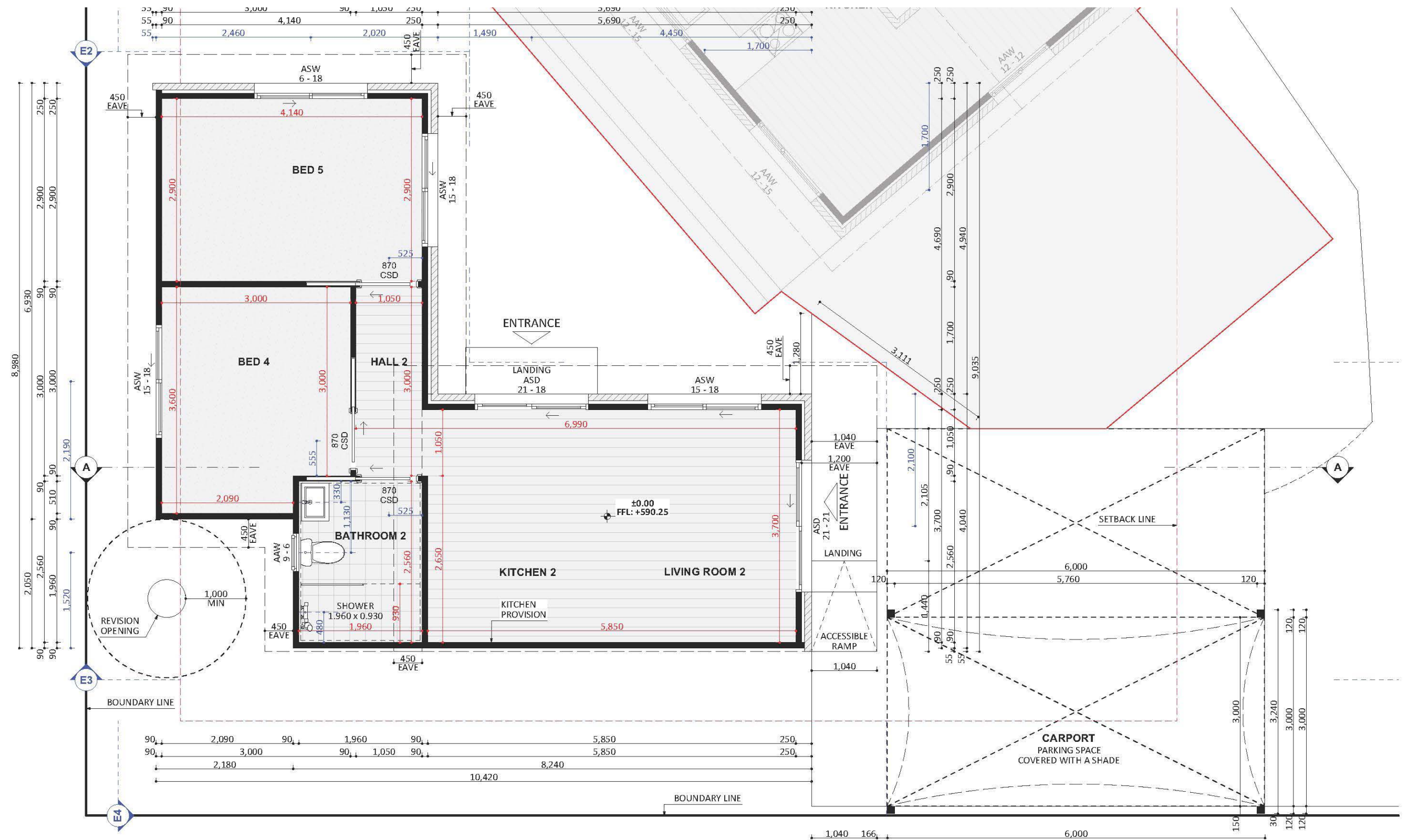
- T1 Tree ID - for all trees - On and Outside the block
- Retained Protected tree - On and Outside the block

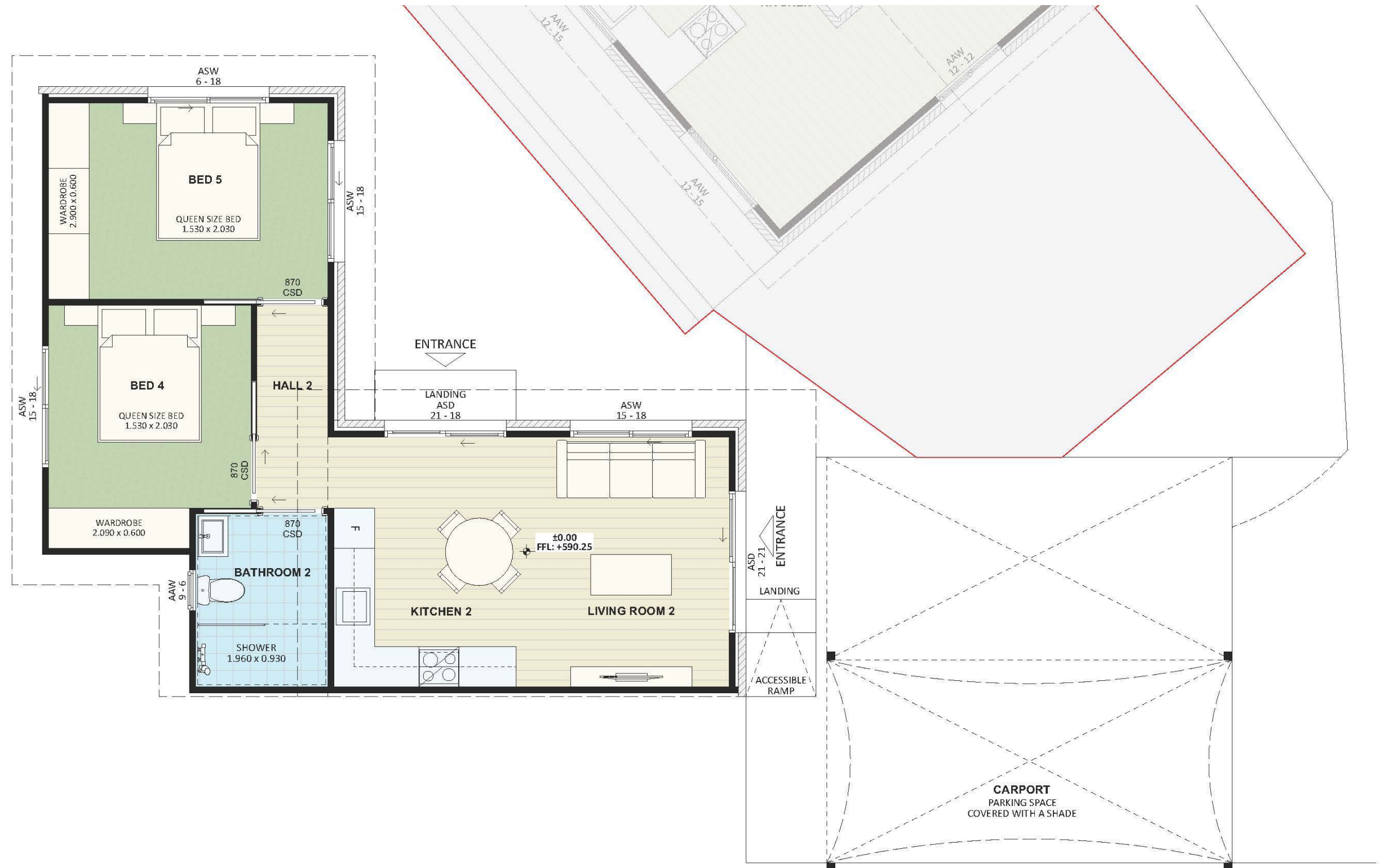
OVERHEAD ELECTRICAL CABLE LEGEND:

- Overhead Service Line, In Service
- Overhead LV Electric Line
- Overhead HV Electric Line
- Telstra and Unidentified - Aerial cable

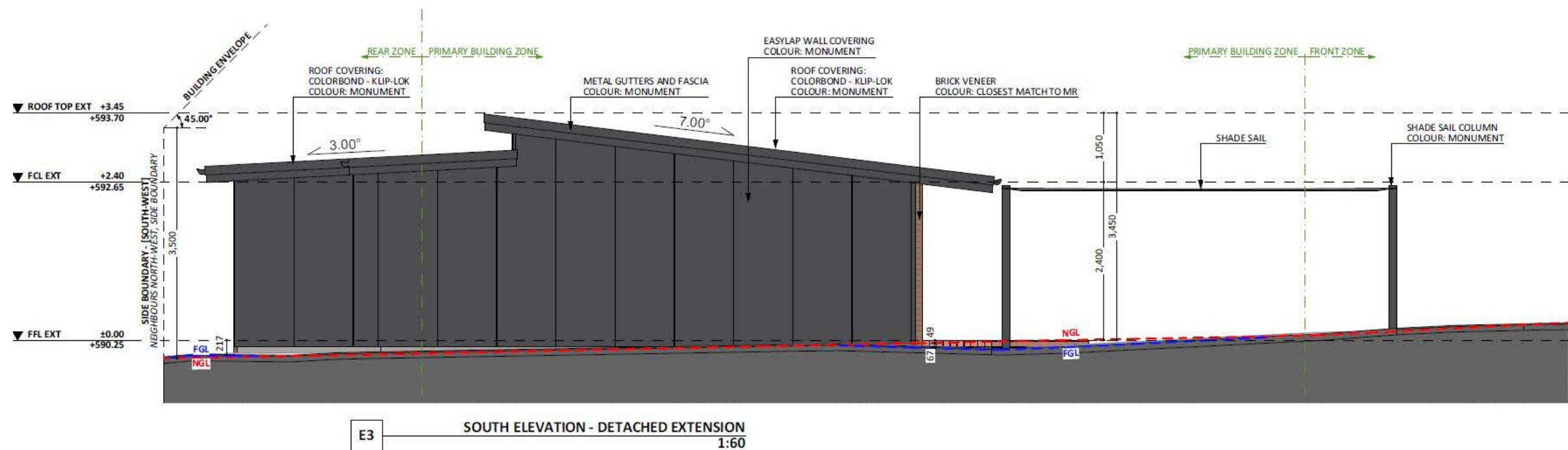
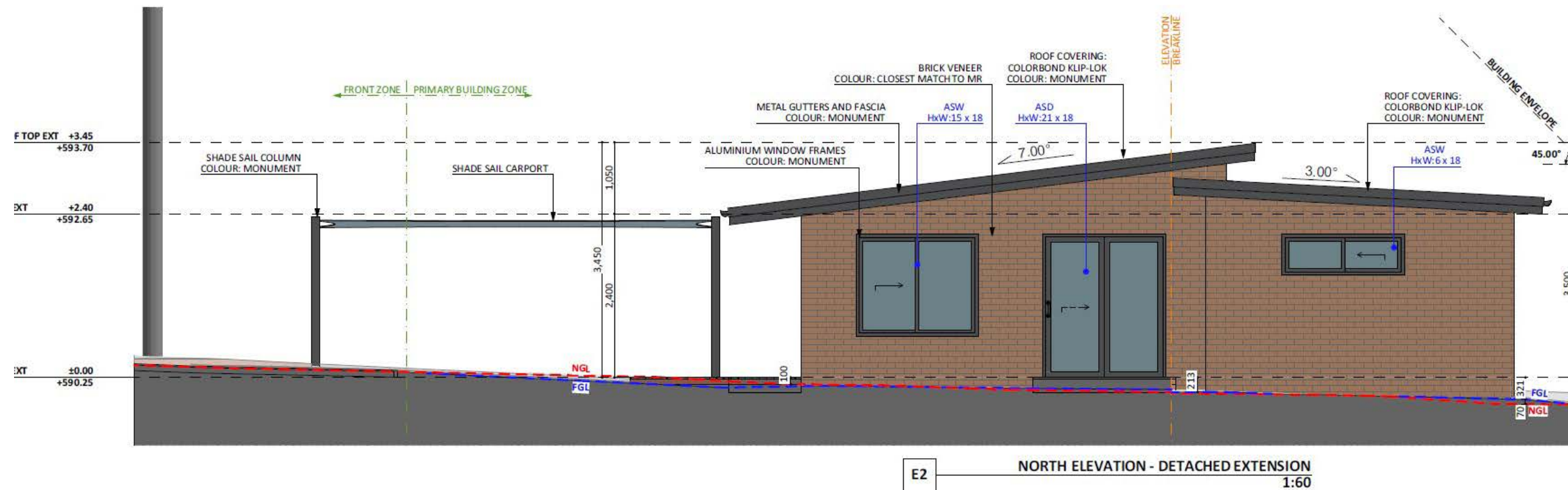
EASEMENT LEGEND:

- Easement maintenance access
- Sewer Pipe Protection Envelope
- Drainage and Electrical
- Drainage
- Electrical
- Sewer
- Sewer and Electrical
- Gas
- Water easement
- Telecommunication

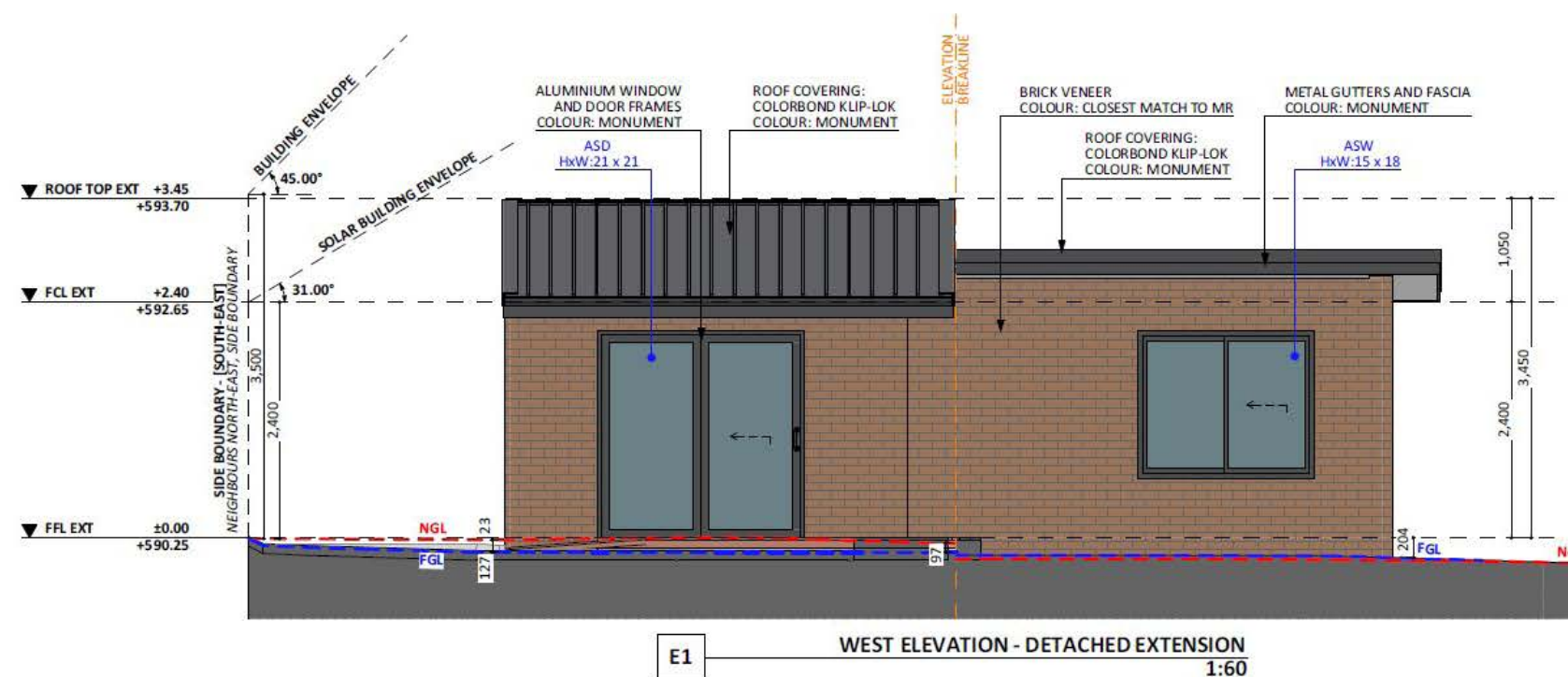
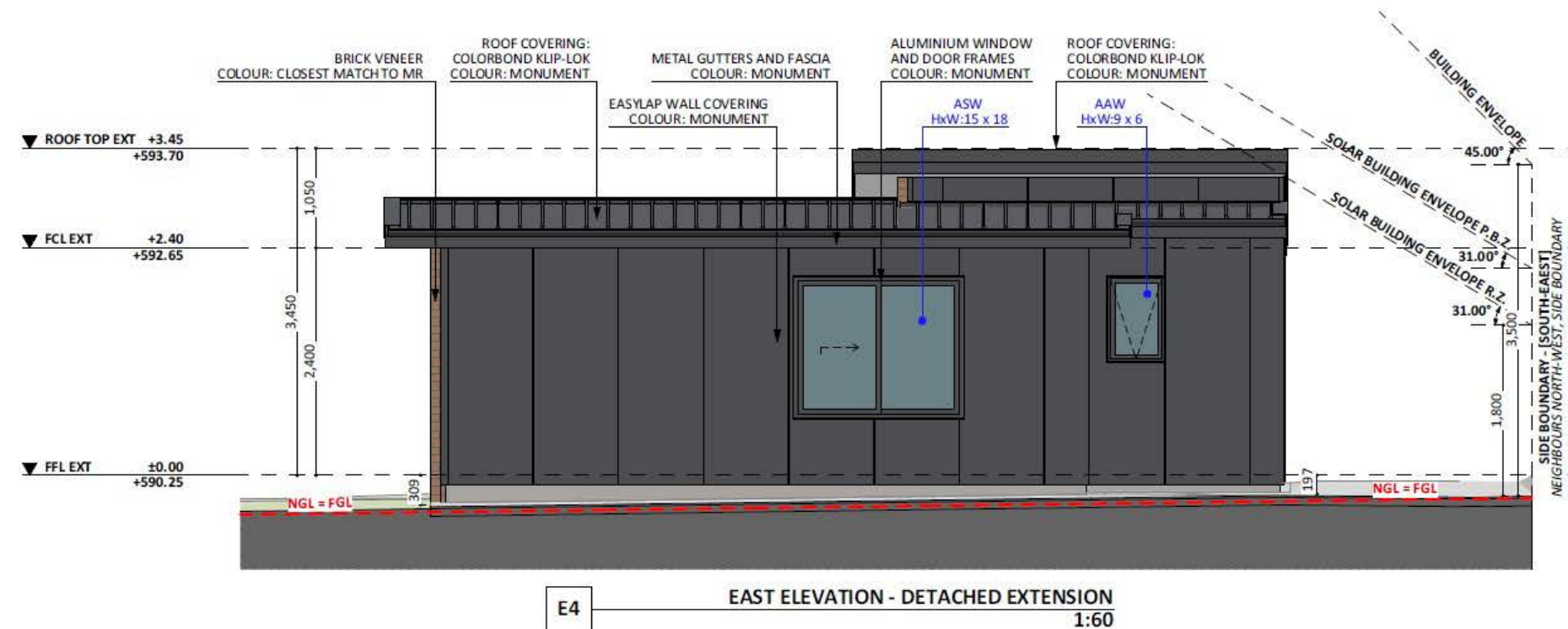




An elevation is the height of the structure from ground level to the height of the roof.



An elevation is the height of the structure from ground level to the height of the roof.





fixedpriceextensions.com.au
canberragrannyflatbuilders.com.au

✉ info@cgfb.com.au

☎ 1300 979 658



ACT Building Lic: 2012767